

Interreg



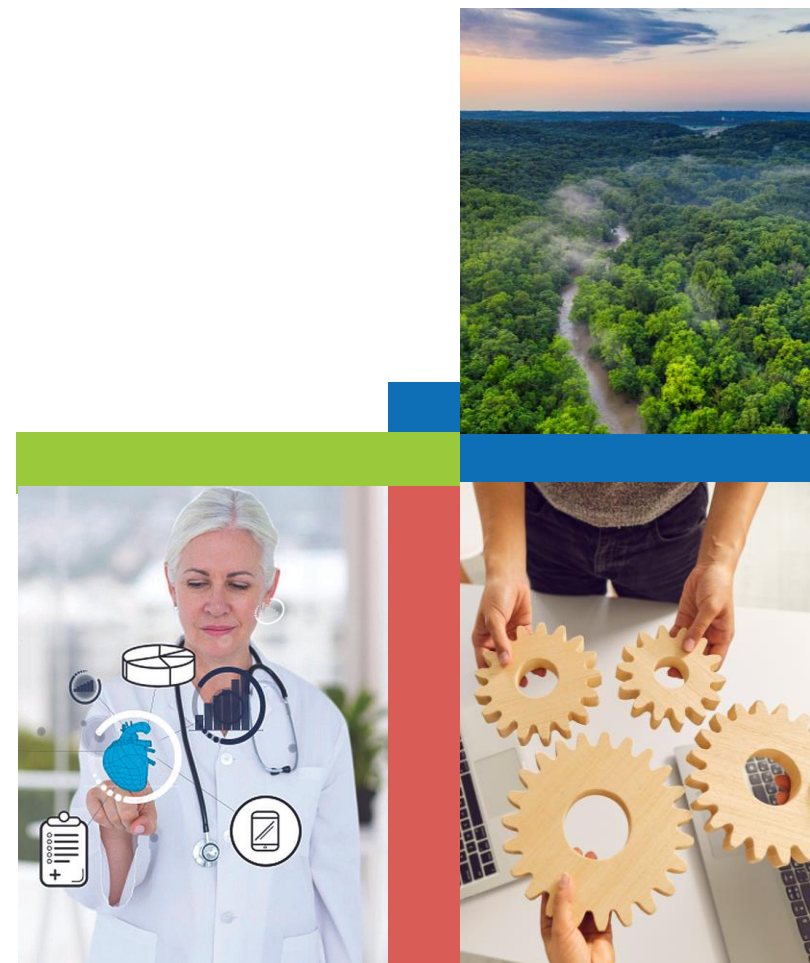
Co-funded by
the European Union

Romania - Hungary

INTERREG VI-A ROMANIA-HUNGARY PROGRAMME

2021-2027 PERIOD

interreg-rohu.eu



PROGRAMME AREA

8 COUNTIES



ADMINISTRATIVE
SURFACE

50,435.31 km²

POPULATION

3,846,734 inhabitants

BUDGET

TOTAL ALLOCATION

€ 175,940,025

out of which

€ 140,752,020

European Regional
Development Fund

VISION

Greener,
more resilient and cohesive
cross-border region,
with enhanced understanding of cooperation
opportunities.

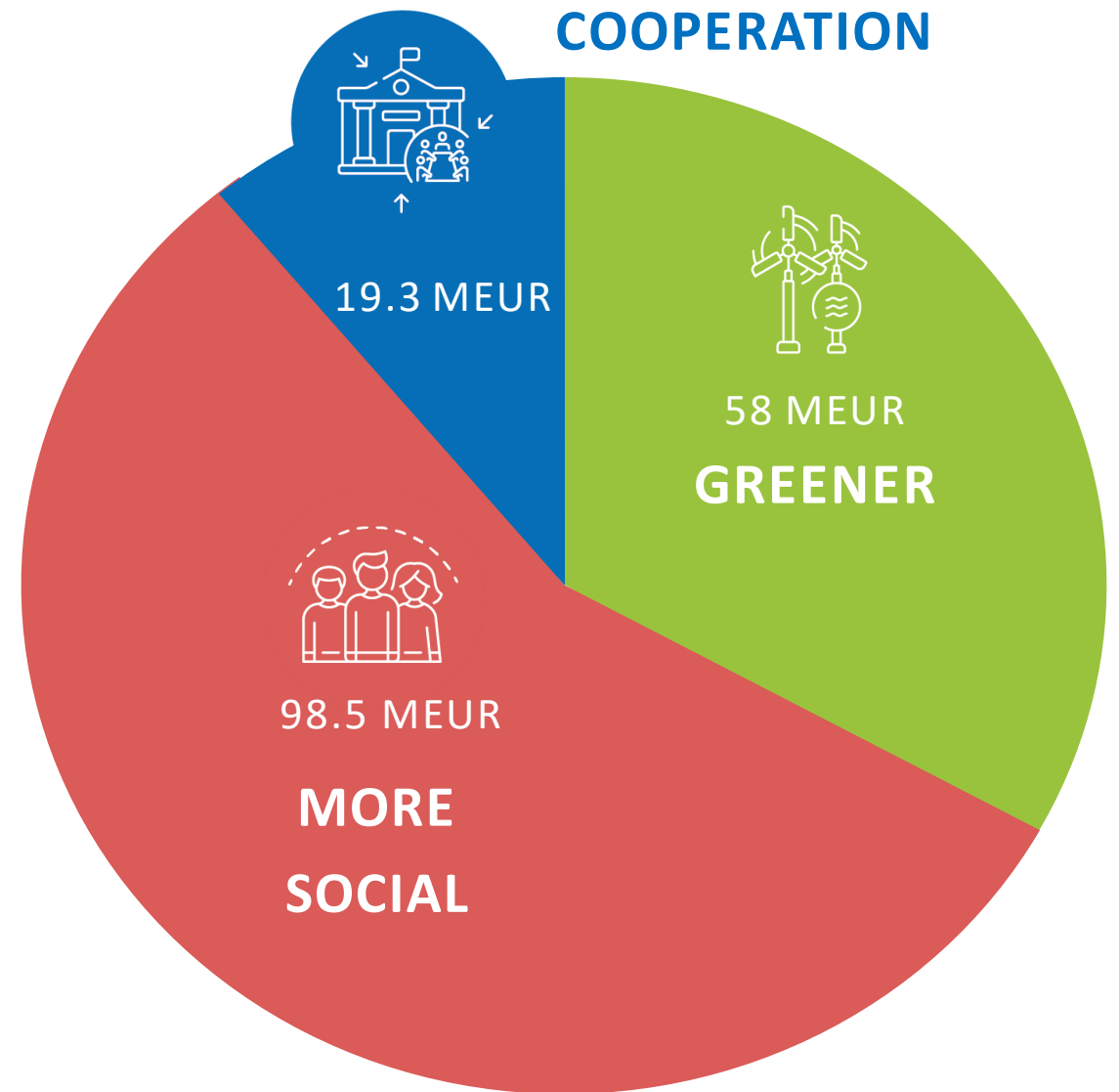


FOCUS ON 3 PRIORITIES

Who can benefit

- Public authorities
- Bodies governed by public law
- NGOs governed by private law
- EGTCs

JOINT SCOPE



ENHANCED COOPERATION IN THE CROSS-BORDER REGION

PRIORITY 1
GREENER
AND
MORE RESILIENT

FINANCED OBJECTIVES

**RENEWABLE
ENERGY**



**CLIMATE CHANGE
&
DISASTER RISK
PREVENTION**



BIODIVERSITY

Actions

S.O. 2.2



Renewable energy projects based on the high potential of Geothermal/ photovoltaic/ other renewable energy resources (RES) in the Programme Area (PA) - joint solutions:

- Encourage cross-border project generation related to the **spread of sustainable RES usage**
- **Mapping** renewable energies at micro-level, assessing barriers and drafting joint strategies for coordinated actions in the energy market
- Best-practice **sharing, exchange** of experience, and joint **capacity** development for better understanding of the advantages and for the uptake of RES utilization tailored to the needs of different stakeholder groups (political-legislative, technical, public, youth and women, etc.)
- **Joint initiatives connected with the New European Bauhaus (i.e. community and stakeholders' participation, co-development of solutions for the best energy mix in the cross-border area, etc)**

Actions

S.O. 2.4



Promoting climate change adaptation, disaster risk prevention and resilience considering eco-system-based approaches:

- Updating rivers' flood risk management plans
- Harmonizing climate change adaptation (CCA) strategies and action plans to improve international collaboration and coordinate activities in the **Danube Region**
- Exploring the direct effects of climate change and implementing mitigation and adaptation measures in environmental risk management plans (**joint strategies**)
- Providing support for **joint risk assessment at cross-border level and related capacity building and exchange of experience**
- Development **institutional capacities** (ex. joint actions) and procedures for better preparedness for disaster management and strengthening the resiliency of national/regional/county authorities, through a harmonized and standardized approach (joint solutions)
- Increase the **preparedness and resilience** of communities against storms, floods, fires and droughts (information and awareness-raising events)

Actions

S.O. 2.7



Enhancing protection and preservation of nature, biodiversity, and green infrastructure, including in urban areas, and reducing all forms of pollution:

- Develop a **joint / cross-border Masterplan** of border Natura2000 areas or sensible areas to focus on the identification of biodiversity hotspots, the common setting of conservation objectives, identifying priority sites for restoration, and measures for mainstreaming the biodiversity
- Foster joint basin-wide management planning on specific issues (e.g. ice on rivers)
- Joint **capacity-building** and **awareness-raising events** among local communities and institutions on biodiversity conservation and protected areas
- Construction of permanent **green and recreational facilities**, including cycling infrastructure
- Promote sustainable **joint floodplain management** through blue and green infrastructure (e.g. small nature-based water retention measures)
- Promoting initiatives connected with the New European Bauhaus** (e.g., community participation in the identification of public areas suitable for the establishment of green infrastructure, and their design)

PRIORITY 2

MORE SOCIAL AND
COHESIVE

FINANCED OBJECTIVES



HEALTH CARE

CULTURE
&
TOURISM



Actions

S.O. 4.5



Ensuring equal access to health care and fostering resilience of health systems, including primary care, and promoting the transition from institutional to family- and community-based care:

- Analysis of trends, needs, standards and **barriers to cooperation for health-care services in the programme area (PA)**, including health status of the population
- Developing (transnational/cross-border) **Action Plans and development strategies in the field of health** (including joint response and civil protection mobilization)
- Joint **capacity building and exchange of experience** for public employees and civil society in the field of health-care service
- Networks** to exchange good practices, and **peer learning** in the field of health-care services
- Investment** in infrastructure, equipment, IT **software /hardware**, support of **eGovernance** in the field of health

Actions

S.O. 4.6



Enhancing the role of culture and sustainable tourism in economic development, social inclusion, and social innovation:

- Identification and **mapping** of natural and cultural heritage, and/or development of **joint promotion and conservation strategies** (in line with the European Quality principles for EU-funded Interventions with potential impact upon Cultural Heritage)
- Territorial marketing initiatives on local resources and traditions
- **Capacity building and exchange of experience** among cross-border actors, including in support of green and digital transformation, resilience and sustainability needs
- Improving the interpretation / adopting innovative methods for **joint territorial marketing** through “Storytelling models” (“Living history” and “Living heritage”)
- Development of sustainable **joint tourism offers and products** incl. investments, embedded into **joint tourism strategies** for local development
- Joint actions for innovative solutions and the creation of thematic routes for the protection and valorization of cultural/rural/natural/religious heritage/ecotourism
- Promoting joint initiatives connected with the **New European Bauhaus** (i.e. using arts and culture for social inclusion, enriching spaces with digital cultural heritage, bottom-up social innovation initiatives, etc)

PRIORITY 3

**BETTER
COOPERATION
GOVERNANCE**

FINANCED OBJECTIVES

**PUBLIC
AUTHORITIES**



**PUBLIC
ADMINISTRATION**



**PEOPLE
TO
PEOPLE
ACTIONS**

Actions

I.S.O. 6.1



Enhance the institutional capacity of public authorities mandated to manage a specific territory, and of Stakeholders:

- Drafting **joint action plans/strategies/institutional agreements** linked to topics not covered under PO 2 and PO 4, mainly focused on **mapping standards, legislation and capacities, and institutional resources**
- Cross-border studies and joint actions on how to tackle **barriers to cooperation**
- Joint actions, events, and exchange of experience on **cross-border strategic planning, project development and joint response capacity**
- Joint actions aiming to eliminate barriers
- Joint actions on fields not covered under PO2 and PO4 selected objectives focused on policy/strategy/multiple funds coordination systems, Monitoring and Evaluation (M&E) at cross-border level

Actions

I.S.O. 6.2



Enhance efficient public administration by promoting legal and administrative cooperation and cooperation between citizens, civil society actors and institutions, with a view to resolving legal and other obstacles in border regions:

- Drafting joint action plans/strategies/institutional agreements linked to topics not covered under PO 2 and PO 4 mainly focused on mapping standards and legislation, filling data gaps and better-understanding barriers to cooperation
- Joint actions, events, and exchange of experience on how to tackle **barriers to cooperation**
- Joint actions on fields not covered under PO2 and PO4 selected objectives focused on policy/strategy/multiple funds coordination systems, Monitoring and Evaluation (M&E) at cross-border level

Actions

I.S.O. 6.3




Build up mutual trust by encouraging people-to-people actions:

- Exchange** of experience, **peer exchanges** and **participation** in small-scale joint events
- Small-scale studies** on fields not covered under PO2 and PO4 selected objectives
- Community initiatives connected with the New European Bauhaus** (i.e. participation of local communities in the co-design of sustainable and inclusive solutions for the renovation of public spaces)
- Other **people-to-people actions**, promoting **trust and cooperation** among communities (i.e. small-scale cultural and educational initiatives)


CALL AND PROJECT TYPES


OPEN CALL

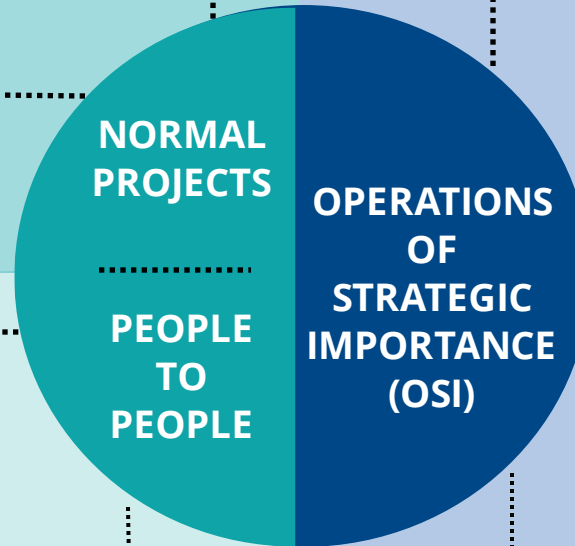
RESTRICTED CALL


 **DURATION**
Max. 30 months

 **ERDF BUDGET**
250,000 - 2 MEUR

 **DURATION**
Max. 12 months

 **ERDF BUDGET**
50,000-200,000 EUR



 **DURATION**
Max. 36 months

 **ERDF BUDGET**
P1&2: max. 8.75 MEUR
P3: max. 3.5 MEUR

 **ONLY OSI PROJECTS**
*Included in Appendix 3 of the Programme



CALL TIMELINE

OPERATIONS OF STRATEGIC IMPORTANCE

LISTED IN APPENDIX 3 OF THE PROGRAMME



PRIORITY 1 GREENER AND MORE RESILIENT CROSS-BORDER AREA



S.O 2.4

1

TIMELY AND EFFICIENT RESPONSE IN CASE OF EMERGENCY SITUATIONS IN CROSS BORDER AREA

GENERAL INSPECTORATE FOR EMERGENCY SITUATIONS
-ROMANIA-

MAIN OUTPUTS: building specialized training centers | purchasing specialized equipment | developing joint protocols and training curriculum

S.O 2.2

2

RENEWABLE ENERGY WORKS WELL IN THE ROMANIAN-HUNGARIAN CROSS-BORDER AREA

HAJDÚ-BIHAR COUNTY DEVELOPMENT AGENCY
-HUNGARY-

MAIN OUTPUTS: developing alternative energy service system | utilizing thermal and solar energy in order to operate municipal institutions

S.O 2.2

3

GREEN CROSS-BORDER REGION

SELF-GOVERNMENT OF SZABOLCS-SZATMÁR-BEREG COUNTY
-HUNGARY-

MAIN OUTPUTS: detailed, comprehensive mapping of the available renewable green energy sources | developing a common local green energy utilization strategy | development of energy communities based on green energy sources

PRIORITY 2

MORE SOCIAL AND COHESIVE PROGRAMME AREA

ROMANIAN-HUNGARIAN CROSS-BORDER CULTURAL LIVING LAB

BIHOR COUNTY COUNCIL
-ROMANIA-

MAIN OUTPUTS: construction of a multifunctional cultural centre in Oradea | creation of a cross-border cultural event digital promotional platform

S.O 4.6

7

S.O 4.5

4

INNOVATIVE SURGICAL UNIT AND EMERGENCY HOSPITALS

ARAD COUNTY COUNCIL
-ROMANIA-

MAIN OUTPUTS: modernisation of healthcare infrastructure and endowment with high-performance equipment

CULTURO-HUB

SATU MARE CITY ADMINISTRATIVE-TERRITORIAL UNIT
-ROMANIA-

MAIN OUTPUTS: renovation and refurbishment of main cultural institutions in Satu Mare and Nyíregyháza | creation of thematic cross-border cultural cooperation programs

S.O 4.6

8

S.O 4.5

5

DEVELOPMENT OF HEALTH INFRASTRUCTURE IN BÉKÉS AND ARAD COUNTIES

LOCAL GOVERNMENT OF BÉKÉS COUNTY
-HUNGARY-

MAIN OUTPUTS: renovation works and equipment investments that improve emergency care, advanced patient care and cardiovascular prevention

INTEGRATED CULTURAL AND TOURISTIC ROUTES IN THE CROSS-BORDER AREA

TIMIŞ COUNTY COUNCIL
-ROMANIA-

MAIN OUTPUTS: developing a joint cultural strategy and action plan | preserving the authenticity of 2 historical monuments, through constructions, arrangements, and endowments | organizing a joint conference and seminar with Hungarian and Romanian historians and students

S.O 4.6

9

S.O 4.5

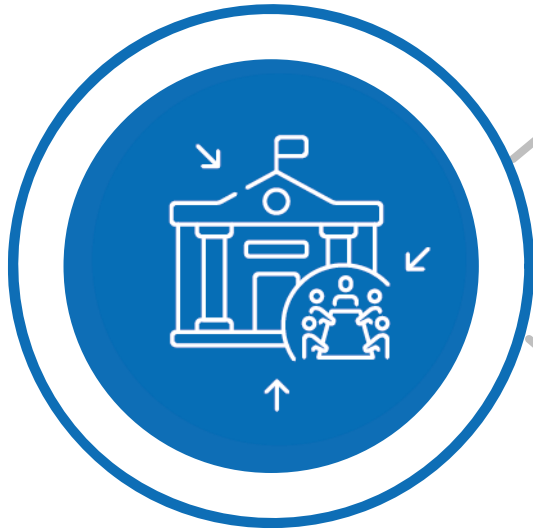
6

RESILIENT, INTEGRATED AND ACCESSIBLE CROSS-BORDER HEALTH SERVICES

TIMIŞ COUNTY COUNCIL
-ROMANIA-

MAIN OUTPUTS: building an Integrative Medicine Center, in Timis County | reconstruction and renovation works at Dr. Bugyi I. Hospital in Szentes, Hungary | creation of a new physical therapy gym and building treatment rooms for spa therapy at Saint Elizabeth Medical Bath in Mórahalom





10

I.S.O 1

SZEGED-TIMISOARA DREAM RAILWAY

CSONGRÁD - CSANÁD COUNTY COUNCIL
-HUNGARY-

MAIN OUTPUTS: elaboration of the detailed feasibility study of the railway Timișoara - Szeged and of the environmental impact assessment | organizing workshops and study tours

11

I.S.O 1

TOGETHER FOR A SAFER AREA

GENERAL INSPECTORATE OF ROMANIAN BORDER POLICE
-ROMANIA-

MAIN OUTPUTS: setting up two training facilities in Bihor and Arad Counties and renovating a training facility in Csongrád-Csanád County | organising joint actions and common training and developing joint procedures | awareness raising

Interreg



Co-funded by
the European Union

Romania - Hungary

**THANK YOU
FOR YOUR
ATTENTION!**

FOLLOW US ON



DISCOVER THE PROGRAMME

interreg-rohu.eu

